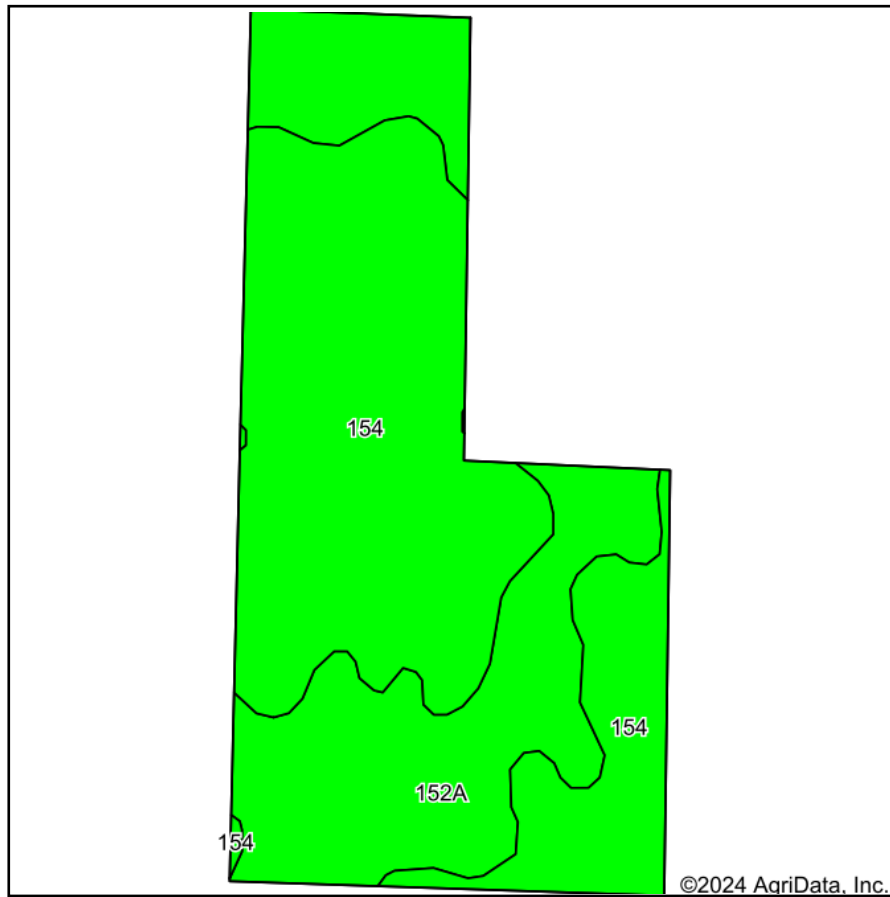
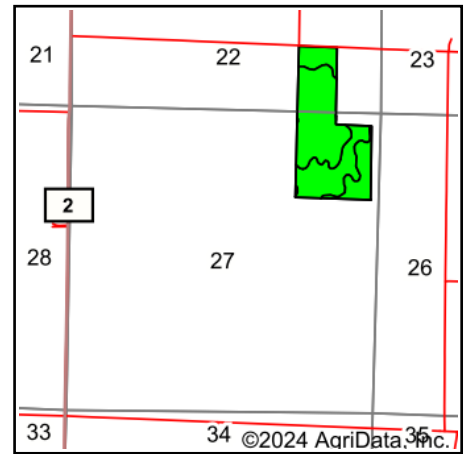


Soils Map



Soils data provided by USDA and NRCS.



State: **Illinois**
 County: **Shelby**
 Location: **27-13N-4E**
 Township: **Todds Point**
 Acres: **59.79**
 Date: **6/5/2024**

Maps Provided By:

 CUSTOMIZED ONLINE MAPPING
 © AgriData, Inc. 2023 www.AgriDataInc.com



Area Symbol: IL173, Soil Area Version: 20

Code	Soil Description	Acres	Percent of field	Il. State Productivity Index Legend	Corn Bu/A	Soybeans Bu/A	Crop productivity index for optimum management
154	Flanagan silt loam	37.18	62.2%		194	63	144
**152A	Drummer silty clay loam, 0 to 2 percent slopes	22.61	37.8%		**195	**63	**144
Weighted Average					194.4	63	144

Table: Optimum Crop Productivity Ratings for Illinois Soil EFOTG are sourced from Bulletin 811 calculated Map Unit Base Yield Indices, and adjusted (Adj) for slope, erosion, flooding, and surface texture. Publication Date: 02-08-2023

Crop yields and productivity (B811 EFOTG) are maintained at the following USDA web site: 2023 Illinois Soil Productivity and Yield Indices:

<https://efotg.sc.egov.usda.gov/#/state/IL/documents/section=2&folder=52809>

** Base indexes from Bulletin 811 adjusted for slope, erosion, flooding, and surface texture according to the Il. Soils EFOTG