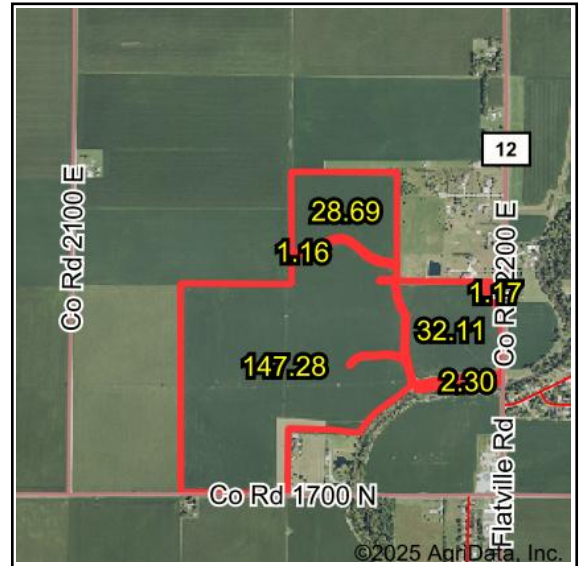
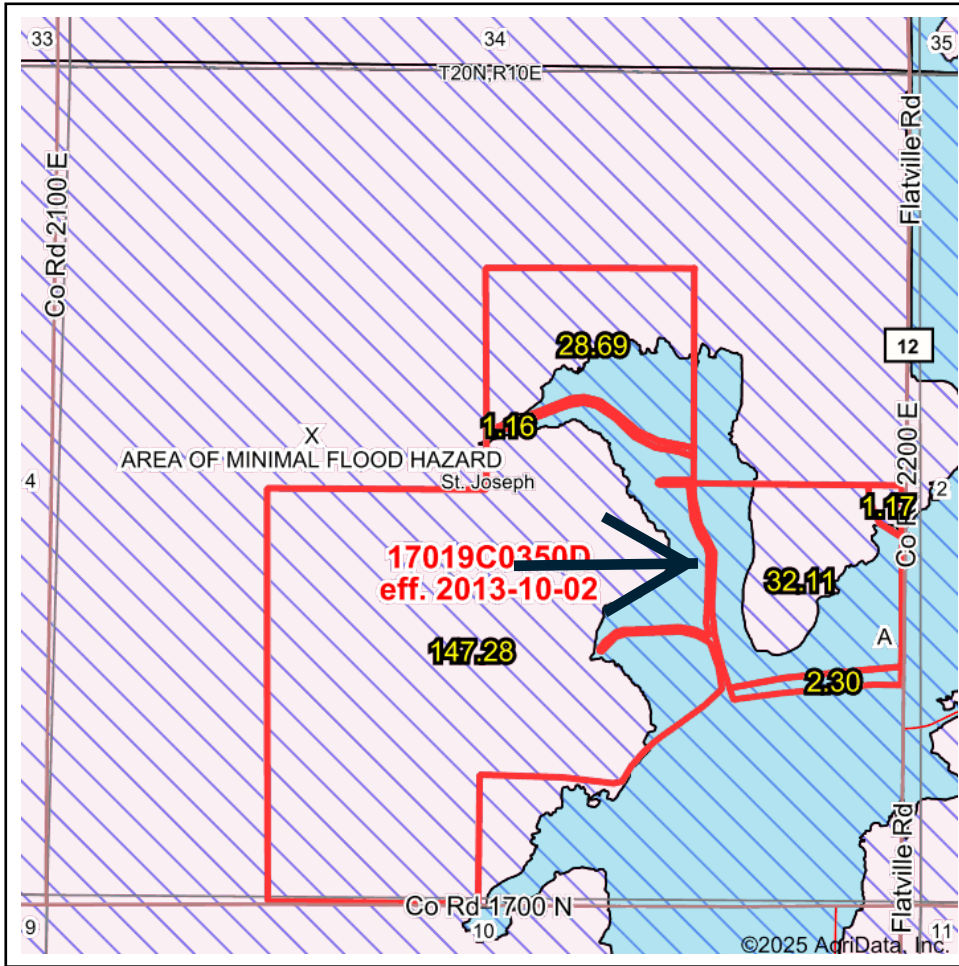


FEMA Report



Map Center: 40° 8' 6.43, -88° 3' 25.09

State: IL Acres: 212.71
 County: Champaign Date: 10/21/2025
 Location: 3-19N-10E
 Township: St. Joseph

Maps Provided By:



Name	Number	County	NFIP Participation	Acres	Percent
Champaign County	170894	Champaign	Regular	212.71	100%
Total				212.71	100%

Map Change	Date	Case No.	Acres	Percent
No			0	0%

Zone	SubType	Description	Acres	Percent
X	AREA OF MINIMAL FLOOD HAZARD	Outside 500-year Floodplain	163.42	76.8%
A		100-year Floodplain	49.29	23.2%
Total			212.71	100%

Panel	Effective Date	Acres	Percent
17019C0350D	10/2/2013	212.71	100%
Total		212.71	100%