



## **HICKEY FARMS LLC**

Farmland Auction – 976 Acres, Logan County, IL  
*September 14, 2023*

### **SOIL TESTS - TRACTS 1 & 2**

On the pages that follow, you will find the current soil fertility tests that are available for the land being sold.





# KSI LABORATORIES

202 S. DACEY DR., SHELBYVILLE, ILLINOIS 62565

PHONE (217) 774-2421

www.KSILab.com

**TRACT 1**

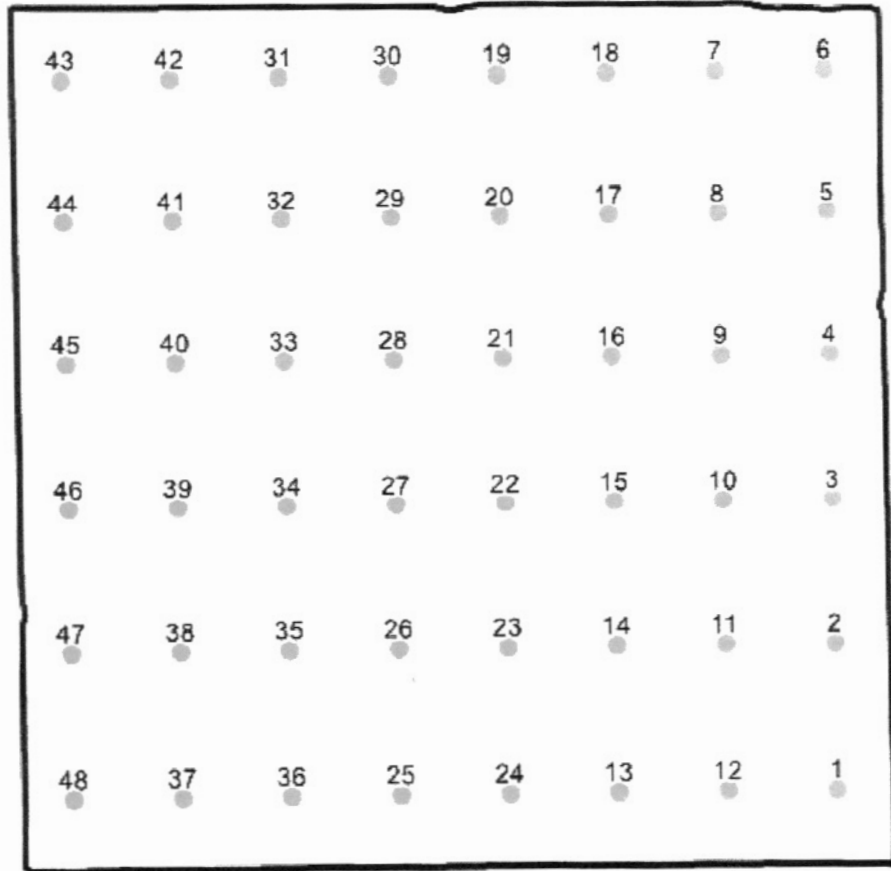


Operator: Jason White  
Farm/Field: Barr/BARR  
Acres: 154.1

Field ID: 155428  
Date: 06/15/2021  
Submitted By: ~~BEASON~~ AG CENTER

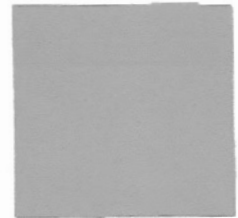
## Legend Base Map

- Water
- Roads
- Timber
- Waterway
- Buildings



Latitude: 40.204381  
Longitude: -89.184867  
Grid Size: 440nsx330ew

200 m  
500 ft





Since 1983

# KSI LABORATORIES

202 S. DACEY DR., SHELBYVILLE, ILLINOIS 62565

PHONE (217) 774-2421

www.KSILab.com

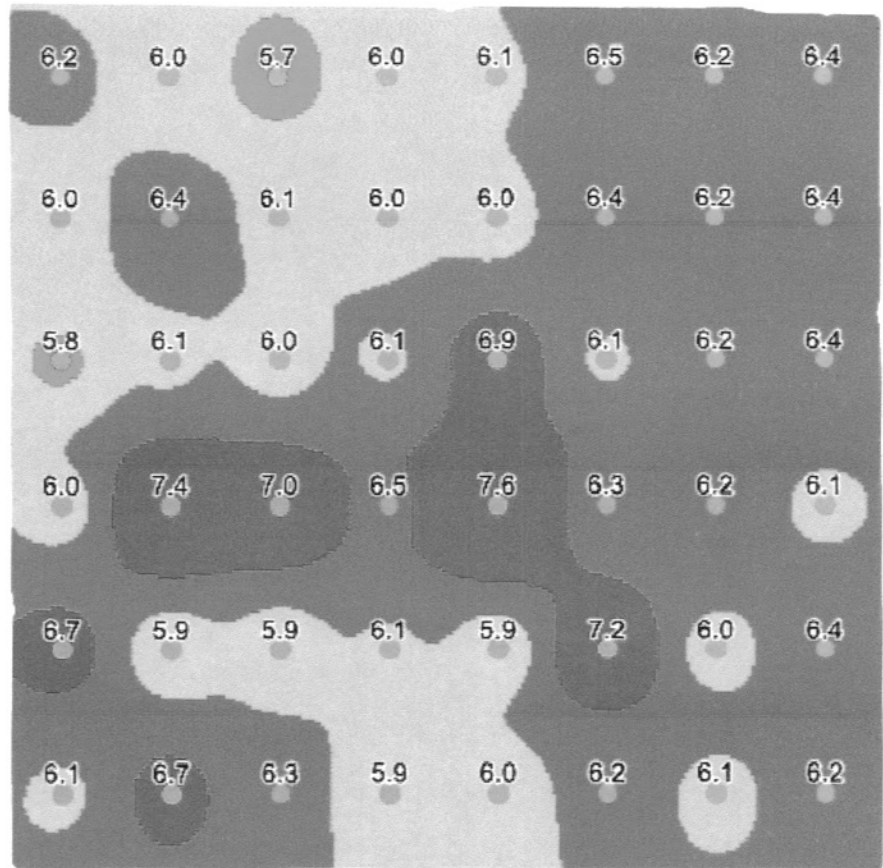


Operator: Jason White  
Farm/Field: Barr/BARR  
Acres: 154.1

Field ID: 155428  
Date: 06/15/2021  
Submitted By: - BEASON AG CENTER

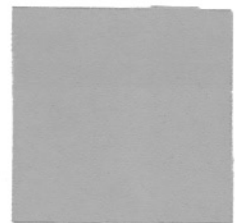
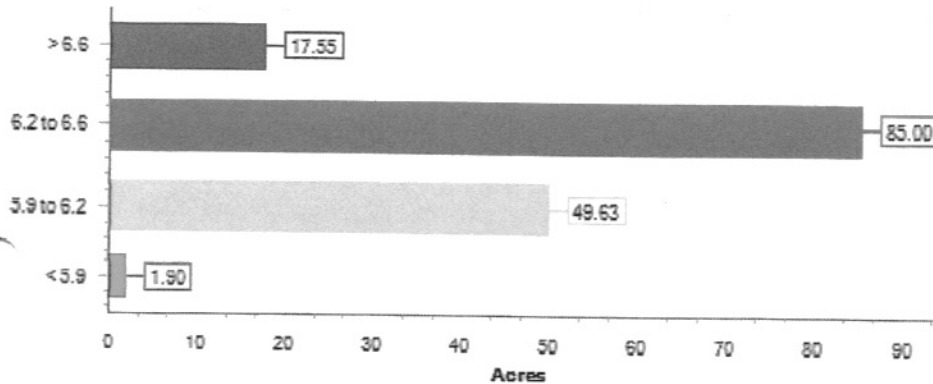
## Legend PH Map

	Below 5.9 Avg: 5.8 Acres: 1.9
	5.9 - 6.1 Avg: 6.1 Acres: 49.6
	6.2 - 6.5 Avg: 6.3 Acres: 85.0
	6.6 and Above Avg: 6.8 Acres: 17.5



Latitude: 40.204381  
Longitude: -89.184867  
Grid Size: 440nsx330ew

200 m  
500 ft





# KSI LABORATORIES

202 S. DACEY DR., SHELBYVILLE, ILLINOIS 62565  
 PHONE (217) 774-2421  
[www.KSILab.com](http://www.KSILab.com)



Operator: Jason White  
 Farm/Field: Barr/BARR  
 Acres: 154.1

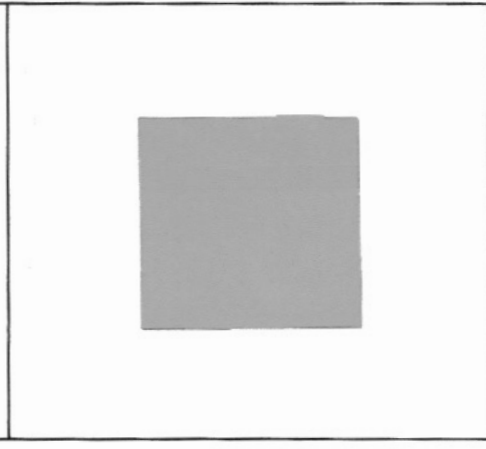
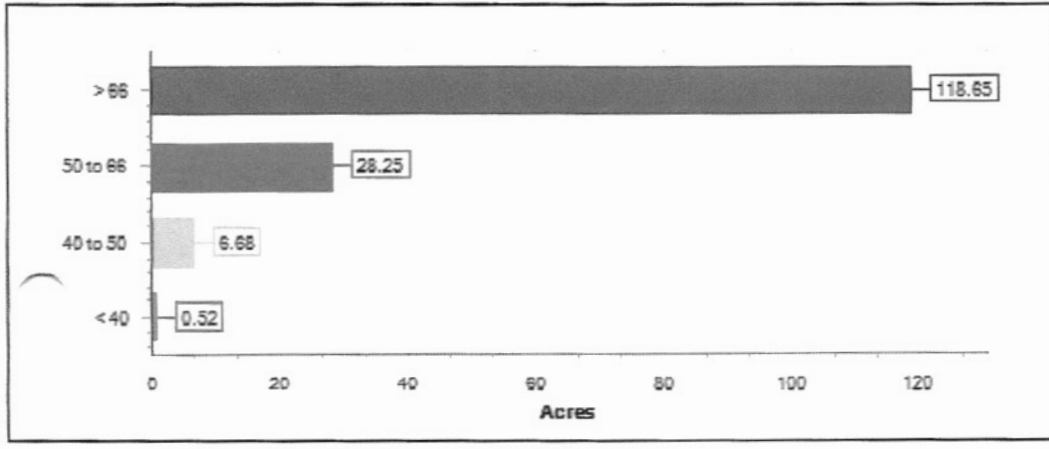
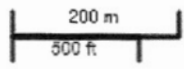
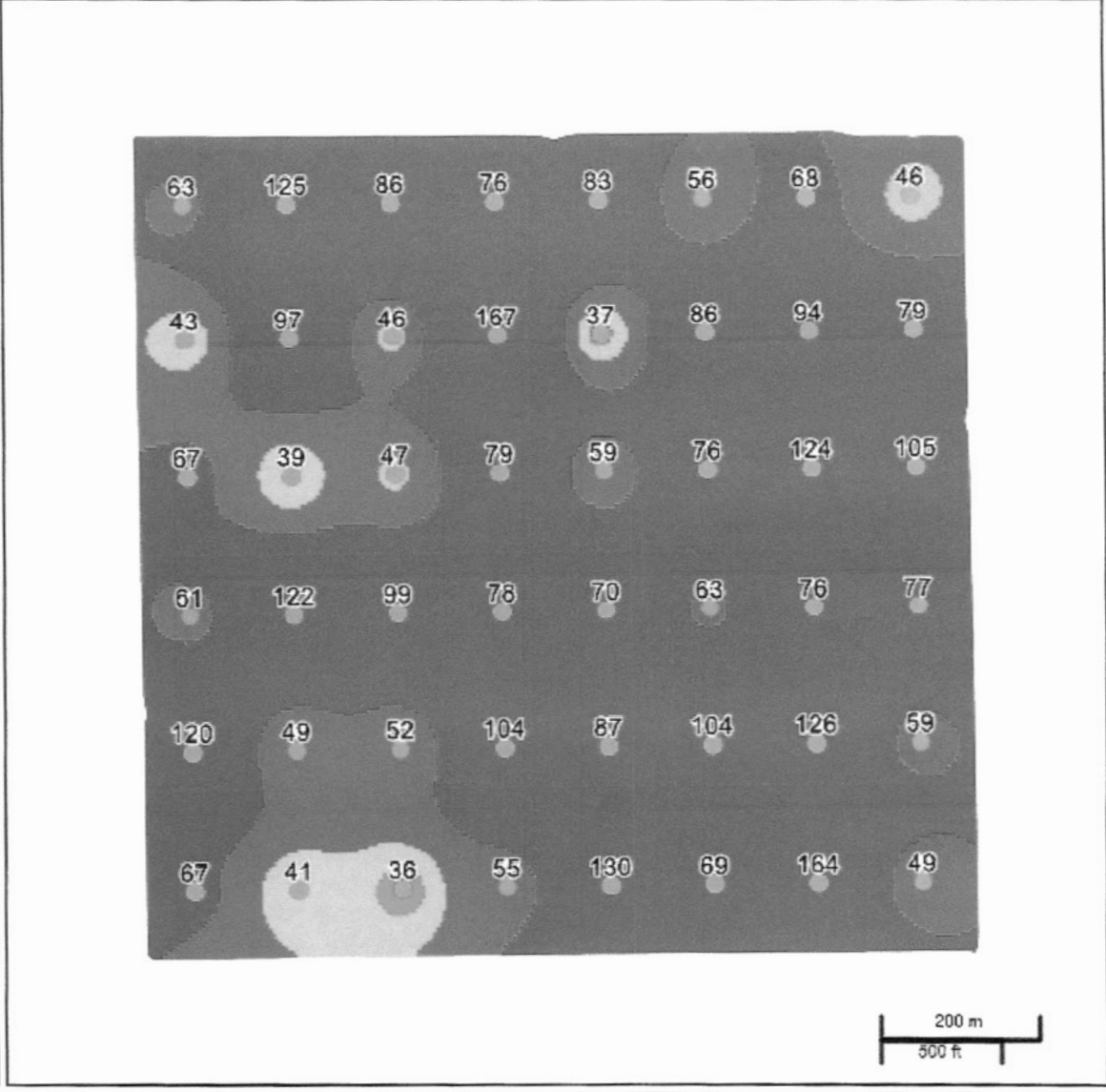
Field ID: 155428  
 Date: 06/15/2021  
 Submitted By: - BEASON AG CENTER

**Legend**

P Map

Under 40	Avg: 38 Acres: 0.5
40 - 49	Avg: 46 Acres: 6.7
50 - 65	Avg: 59 Acres: 28.2
Above 65	Avg: 87 Acres: 118.6

Latitude: 40.204381  
 Longitude: -89.184867  
 Grid Size: 440nsx330ew







Since 1983

# KSI LABORATORIES

202 S. DACEY DR., SHELBYVILLE, ILLINOIS 62565

PHONE (217) 774-2421

www.KSILab.com



Operator: Jason White  
Farm/Field: Barr/BARR  
Acres: 154.1

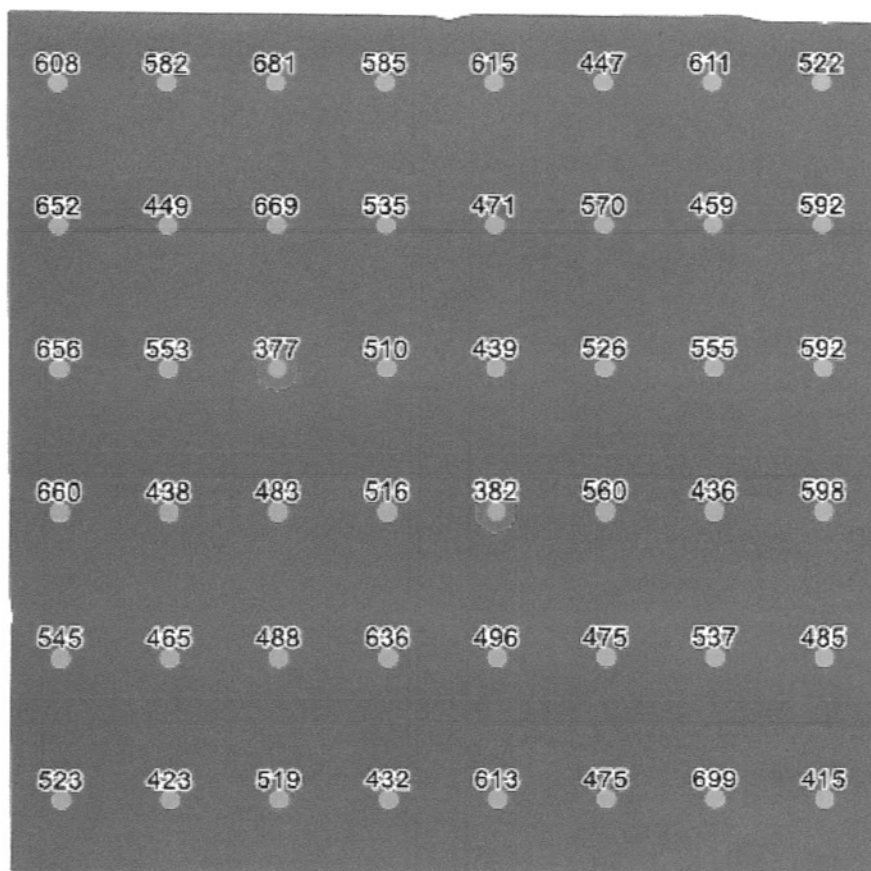
Field ID: 155428  
Date: 06/15/2021  
Submitted By: - BEASON AG CENTER

## Legend

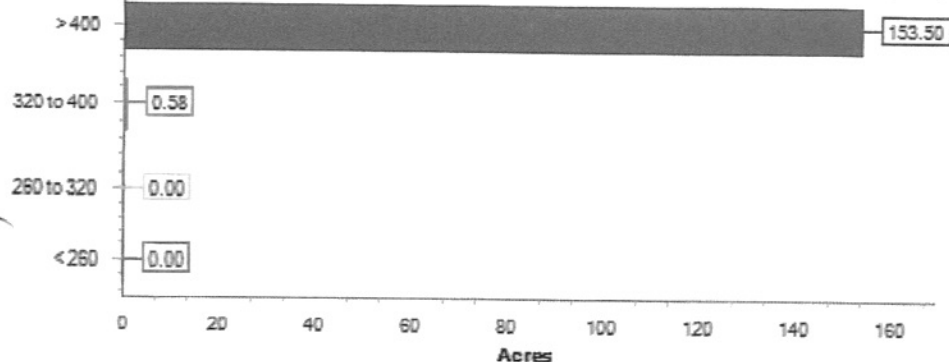
K Map

	Below 260
	Avg: Acres: 0.0
	260 - 319
	Avg: Acres: 0.0
	320 - 399
	Avg: 390 Acres: 0.6
	400 and Above
	Avg: 532 Acres: 153.5

Latitude: 40.204381  
Longitude: -89.184867  
Grid Size: 440nsx330ew



200 m  
500 ft



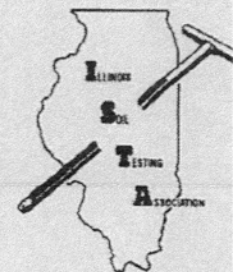


# KSI LABORATORIES

202 S. DACEY DR., SHELBYVILLE, ILLINOIS 62565

PHONE (217) 774-2421

www.KSILab.com



OPERATOR: JASON WHITE  
FIELD: BARRIBARR  
ACRES: 154.1

LAB#: 129426-73 (11157)  
DATE: 06/11/2021  
SUBMITTED BY: - BEASON AG CENTER

## SOIL TEST RESULTS

SAMPLE#	SOIL pH	BUFFER pH	PHOSPHORUS lbs/A	POTASSIUM lbs/A	CALCIUM lbs/A	MAGNESIUM lbs/A	ORGANIC MATTER %	CATION EXCHANGE CAPACITY	BASE SATURATION			
									%Ca	%Mg	%K	%H
1	6.2	7.0	49	415	4786	744	3.0	18.6	64.4	16.7	2.9	16.0
2	6.4	7.0	59	485	6042	798	3.4	21.6	70.0	15.4	2.9	11.6
3	6.1	6.9	77	598	3781	390	2.6	14.4	65.7	11.3	5.4	17.6
4	6.4	7.0	105	592	7678	1071	3.0	27.7	69.3	16.2	2.8	11.7
5	6.4	7.0	79	592	5929	722	3.4	21.1	70.3	14.3	3.6	11.7
6	6.4	7.0	46	522	4696	525	2.4	16.6	70.8	13.2	4.1	11.9
7	6.2	6.9	68	611	5071	563	3.4	18.8	67.5	12.5	4.2	15.8
8	6.2	6.8	94	459	7038	956	3.5	26.4	66.7	15.1	2.3	15.9
9	6.2	6.9	124	555	6454	905	3.4	24.5	65.9	15.4	3.0	15.7
10	6.2	6.8	76	436	4711	530	3.6	17.3	68.1	12.8	3.3	15.8
11	6.0	6.7	126	537	6294	983	3.3	25.6	61.5	16.0	2.7	19.7
12	6.1	6.7	164	699	6913	1067	3.5	27.6	62.7	16.2	3.3	17.9
13	6.2	6.9	69	475	5458	807	3.4	21.0	65.0	16.1	2.9	16.0
14	7.2	7.0	104	475	6884	1492	3.2	24.0	71.8	26.0	2.6	-
15	6.3	6.9	63	560	6391	901	3.5	23.8	67.2	15.8	3.1	13.9
16	6.1	6.8	76	526	4963	600	3.3	19.0	65.4	13.2	3.6	17.8
17	6.4	7.0	86	570	6380	876	3.4	23.1	69.1	15.9	3.2	11.8
18	6.5	7.0	56	447	4597	535	3.2	15.9	72.3	14.1	3.7	9.9
19	6.1	6.8	83	615	3827	427	3.3	14.8	64.7	12.1	5.4	17.9
20	6.0	6.7	37	471	4399	580	3.4	17.5	62.9	13.9	3.5	19.7
21	6.9	7.0	59	439	6185	1305	3.5	21.9	70.7	24.9	2.6	1.8
22	7.6	7.0	70	382	7049	1740	3.4	25.4	69.4	28.6	2.0	-
23	5.9	6.5	87	496	6246	983	3.6	26.1	59.9	15.7	2.5	21.9
24	6.0	6.7	130	613	6683	1111	3.4	27.7	60.4	16.8	2.9	20.0
25	5.9	6.6	55	432	4602	726	3.4	19.3	59.7	15.7	2.9	21.7
26	6.1	6.7	104	636	6147	1029	3.6	25.0	61.5	17.2	3.3	18.0
27	6.5	7.0	78	516	5932	1055	3.6	22.1	67.2	19.9	3.0	9.9
28	6.1	6.8	79	510	5317	844	3.4	21.3	62.5	16.6	3.1	17.9
29	6.0	6.7	167	535	3175	367	3.3	12.7	62.6	12.1	5.5	19.9
30	6.0	6.8	76	585	3106	270	2.8	12.1	64.2	9.3	6.2	20.2
31	5.7	6.6	86	681	2554	215	2.5	11.0	58.1	8.2	8.0	25.7
32	6.1	6.9	46	669	2975	293	2.7	11.6	64.2	10.6	7.4	17.8
33	6.0	6.8	47	377	3111	350	2.8	12.1	64.3	12.1	4.0	19.5
34	7.0	7.0	99	483	5981	1300	3.3	21.0	71.3	25.8	3.0	-
35	5.9	6.6	52	488	4955	693	3.4	20.4	60.8	14.2	3.1	21.9
36	6.3	7.0	36	519	4017	436	2.8	14.6	68.8	12.5	4.6	14.1
37	6.7	7.0	41	423	4854	605	3.3	16.2	75.0	15.6	3.4	6.0
38	5.9	6.6	49	465	4513	517	3.4	18.0	62.7	12.0	3.4	21.9
39	7.4	7.0	122	438	6065	1333	3.4	21.3	71.2	26.1	2.7	-
40	6.1	6.9	39	553	2824	302	2.8	11.0	64.2	11.5	6.5	17.8
41	6.4	7.0	97	449	3217	392	2.8	11.6	69.4	14.1	5.0	11.5
42	6.0	6.7	125	582	3436	301	3.2	13.2	65.1	9.6	5.7	19.6

ANALYTICAL SERVICES FOR AGRICULTURE

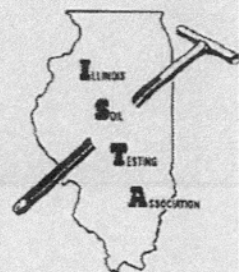


# KSI LABORATORIES

202 S. DACEY DR., SHELBYVILLE, ILLINOIS 62565

PHONE (217) 774-2421

www.KSILab.com



OPERATOR: JASON WHITE  
FIELD: BARRIBARR  
ACRES: 154.1

LAB#: 129426-73 (11157)  
DATE: 06/11/2021  
SUBMITTED BY: - BEASON AG CENTER

## SOIL TEST RESULTS

SAMPLE#	SOIL pH	BUFFER pH	PHOSPHORUS lbs/A	POTASSIUM lbs/A	CALCIUM lbs/A	MAGNESIUM lbs/A	ORGANIC MATTER %	CATION EXCHANGE CAPACITY	BASE SATURATION			
									%Ca	%Mg	%K	%H
43	6.2	7.0	63	608	3066	282	2.8	11.5	66.7	10.3	6.8	16.2
44	6.0	6.8	43	652	2946	322	2.7	11.9	61.9	11.3	7.1	19.7
45	5.8	6.6	67	656	2428	251	2.8	10.5	57.9	10.0	8.1	24.1
46	6.0	6.8	61	660	3124	346	2.7	12.6	62.0	11.5	6.8	19.7
47	6.7	7.0	120	545	5444	961	3.3	19.5	69.8	20.6	3.6	5.9
48	6.1	6.8	67	523	4229	522	3.4	16.4	64.5	13.3	4.1	18.0
AVERAGE	6.3	6.8	79	532	4927	715	3.2	18.7	65.8	15.2	4.1	16.3
PH AVE.	6.2	EXTRACTED SAMPLES: 14,21,22,34,39,										
P1 AVE.	69	EXTRACTED SAMPLES: 9,11,12,24,29,36,39,42,47,										
K AVE.	526	EXTRACTED SAMPLES: 12,31,										
MICRO NUTRIENT TEST RESULTS												
=====												
SAMPLE	S Lbs/a	Zn Lbs/a	Fe Lbs/a	Mn Lbs/a	Cu Lbs/a	B Lbs/a	Na Lbs/a	SALT mmhos	NO3 PPM	NH4 PPM		
Average	16	3.0	124	56	4.5	1.5	23	-	-	-		

ANALYTICAL SERVICES FOR AGRICULTURE





# KSI LABORATORIES

202 S. DACEY DR., SHELBYVILLE, ILLINOIS 62565

PHONE (217) 774-2421

www.KSILab.com



**TRACT 2**

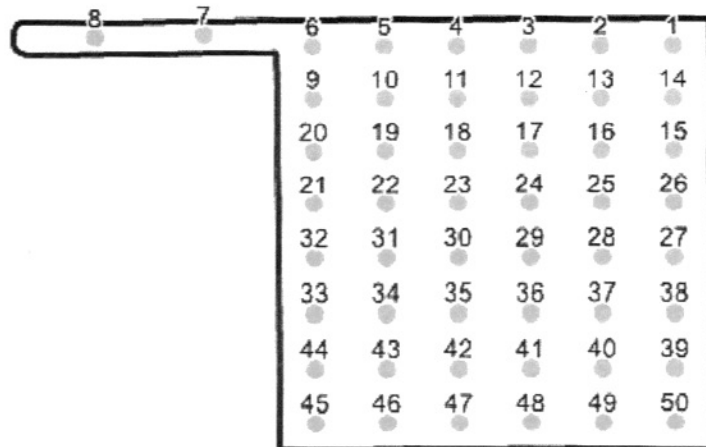
Operator: Jason White  
Farm/Field: HICKEY/HICKEY BEASON FARM  
Acres: 161.7

Field ID: 171103  
Date: 06/10/2022  
Submitted By: - BEASON AG CENTER

## Legend Base Map

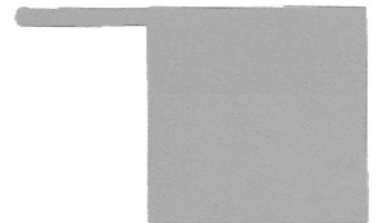
- Water
- Roads
- Timber
- Waterway
- Buildings

Latitude: 40.139646  
Longitude: -89.181838  
Grid Size: 330nsx440ew



500 m  
1000 ft

n







# KSI LABORATORIES

202 S. DACEY DR., SHELBYVILLE, ILLINOIS 62565

PHONE (217) 774-2421

www.KSILab.com

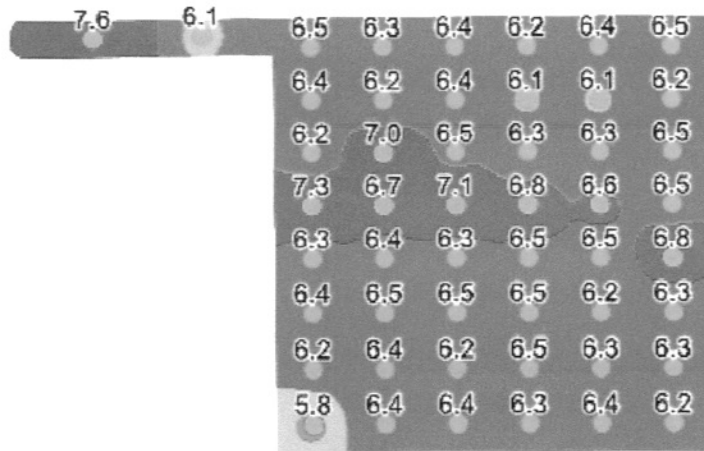


Operator: Jason White  
Farm/Field: HICKEY/HICKEY BEASON FARM  
Acres: 161.7

Field ID: 171103  
Date: 06/10/2022  
Submitted By: - BEASON AG CENTER

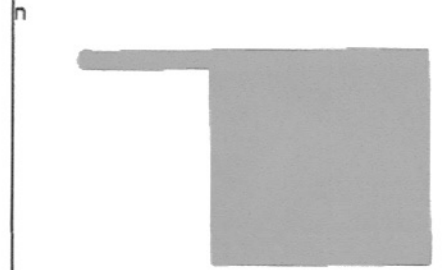
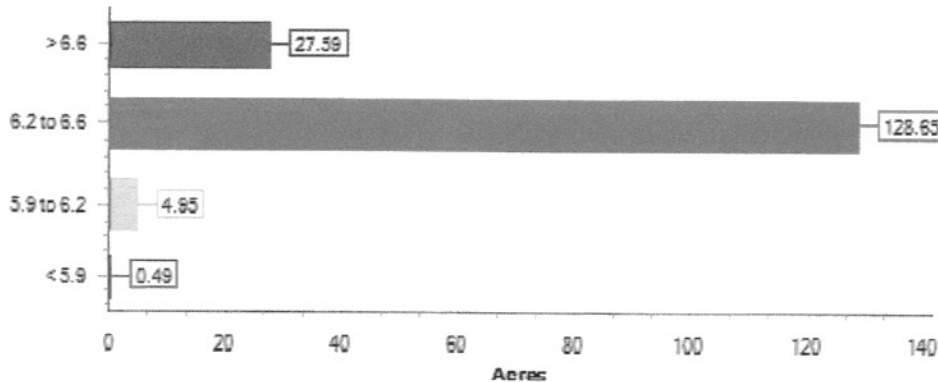
## Legend PH Map

	Below 5.9 Avg: 5.8 Acres: 0.5
	5.9 - 6.1 Avg: 6.0 Acres: 5.0
	6.2 - 6.5 Avg: 6.4 Acres: 128.6
	6.6 and Above Avg: 6.8 Acres: 27.6



Latitude: 40.139646  
Longitude: -89.181838  
Grid Size: 330nsx440ew

500 m  
1000 ft





Since 1983

# KSI LABORATORIES

202 S. DACEY DR., SHELBYVILLE, ILLINOIS 62565

PHONE (217) 774-2421

www.KSILab.com



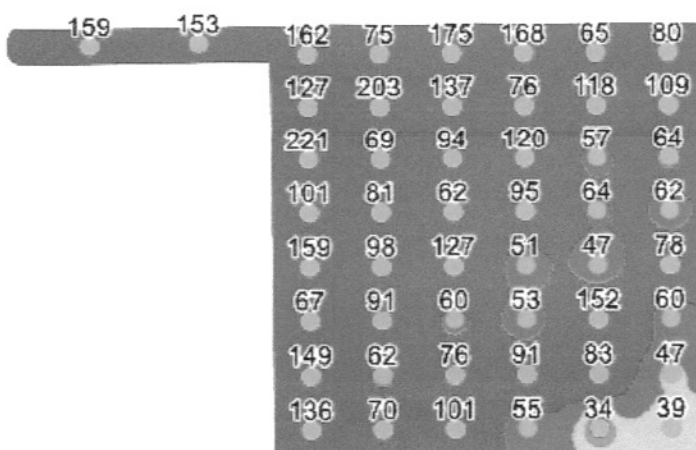
Operator: Jason White  
Farm/Field: HICKEY/HICKEY BEASON FARM  
Acres: 161.7

Field ID: 171103  
Date: 06/10/2022  
Submitted By: - BEASON AG CENTER

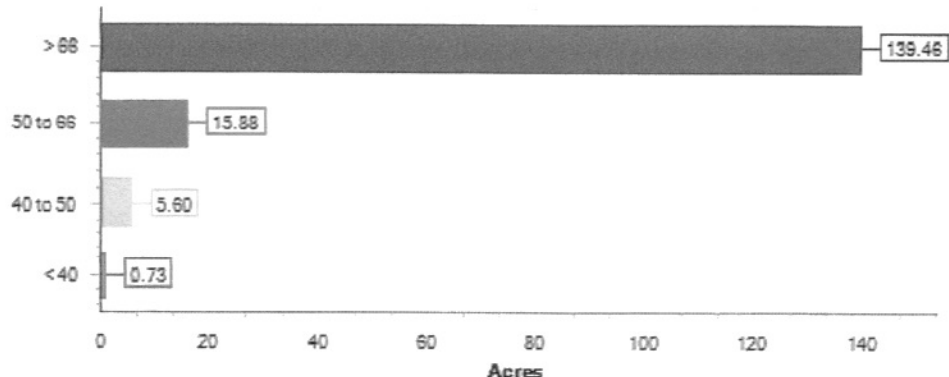
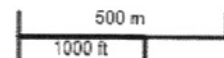
## Legend

P Map

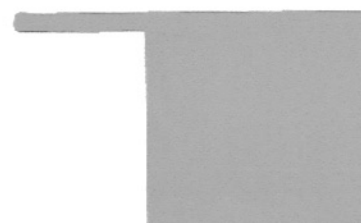
	Under 40
	Avg: 37 Acres: 0.7
	40 - 49
	Avg: 45 Acres: 5.6
	50 - 65
	Avg: 60 Acres: 15.9
	Above 65
	Avg: 105 Acres: 139.5



Latitude: 40.139646  
Longitude: -89.181838  
Grid Size: 330nsx440ew



n





# KSI LABORATORIES

202 S. DACEY DR., SHELBYVILLE, ILLINOIS 62565

PHONE (217) 774-2421

www.KSILab.com



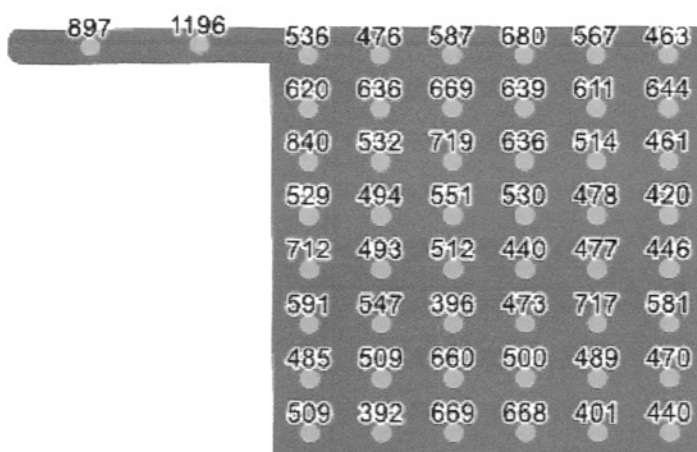
Operator: Jason White  
Farm/Field: HICKEY/HICKEY BEASON FARM  
Acres: 161.7

Field ID: 171103  
Date: 06/10/2022  
Submitted By: - BEASON AG CENTER

## Legend

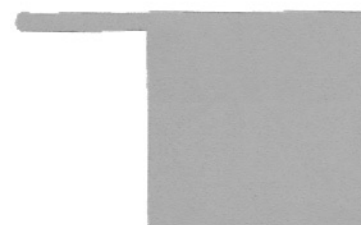
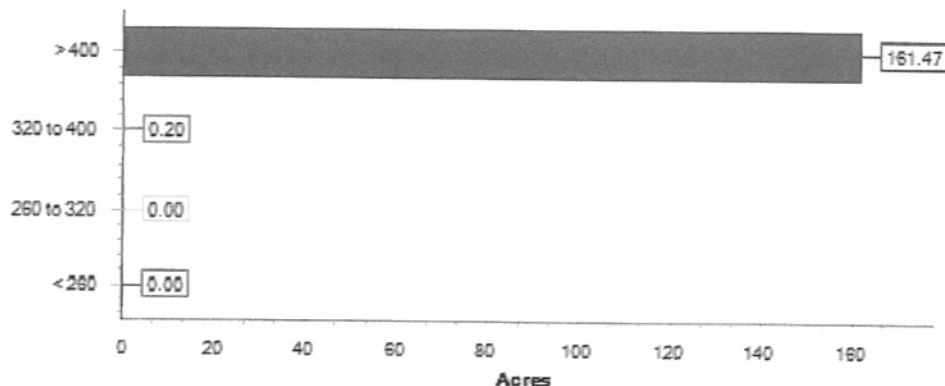
K Map

	Below 260 Avg: Acres: 0.0
	260 - 319 Avg: Acres: 0.0
	320 - 399 Avg: 396 Acres: 0.2
	400 and Above Avg: 570 Acres: 161.5



Latitude: 40.139646  
Longitude: -89.181838  
Grid Size: 330nsx440ew

500 m  
1000 ft







# KSI LABORATORIES

202 S. DACEY DR., SHELBYVILLE, ILLINOIS 62565

PHONE (217) 774-2421

www.KSILab.com



**OPERATOR:** JASON WHITE  
**FIELD:** HICKEY/HICKEY BEASON FARM  
**ACRES:** 161.7

**LAB#:** 103030-79 (8657)  
**DATE:** 06/06/2022  
**SUBMITTED BY:** - BEASON AG CENTER

## SOIL TEST RESULTS

SAMPLE#	SOIL pH	BUFFER pH	PHOSPHORUS lbs/A	POTASSIUM lbs/A	CALCIUM lbs/A	MAGNESIUM lbs/A	ORGANIC MATTER %	CATION EXCHANGE CAPACITY	BASE SATURATION			
									%Ca	%Mg	%K	%H
1	6.5	7.0	80	463	4543	445	2.7	15.3	74.3	12.2	3.9	9.6
2	6.4	7.0	65	567	4747	485	2.6	16.6	71.5	12.2	4.4	11.8
3	6.2	7.0	168	680	6665	871	3.0	25.2	66.2	14.5	3.5	15.9
4	6.4	7.0	175	587	6777	896	3.4	24.4	69.5	15.4	3.1	12.0
5	6.3	7.0	75	476	5523	639	3.2	19.9	69.4	13.4	3.1	14.0
6	6.5	7.0	162	536	3960	312	2.8	13.2	75.1	9.9	5.3	9.8
7	6.1	6.9	153	1196	5700	749	3.0	23.1	61.7	13.6	6.7	18.0
8	7.6	7.0	159	897	14011	835	3.4	39.7	88.3	8.8	2.9	-
9	6.4	7.0	127	620	6359	740	3.2	22.5	70.7	13.8	3.6	12.0
10	6.2	6.8	203	636	7057	1023	3.5	27.0	65.4	15.8	3.1	15.7
11	6.4	7.0	137	669	7512	1268	3.3	28.3	66.4	18.7	3.1	11.8
12	6.1	6.8	76	639	5846	716	3.4	22.5	65.0	13.3	3.7	18.0
13	6.1	6.8	118	611	4934	603	3.2	19.1	64.6	13.2	4.2	18.0
14	6.2	6.9	109	644	5198	688	3.4	19.9	65.4	14.5	4.2	16.0
15	6.5	7.0	64	461	4600	363	3.0	15.1	76.2	10.1	4.0	9.8
16	6.3	7.0	57	514	4403	476	3.3	15.9	69.3	12.5	4.2	14.0
17	6.3	7.0	120	636	6910	739	3.2	24.6	70.3	12.6	3.4	13.8
18	6.5	7.0	94	719	7252	855	3.4	25.1	72.3	14.2	3.7	9.8
19	7.0	7.0	69	532	9400	1478	3.3	30.3	77.6	20.4	2.3	-
20	6.2	6.9	221	840	7707	1097	3.4	29.7	64.9	15.4	3.7	16.0
21	7.3	7.0	101	529	10248	1508	3.2	32.6	78.6	19.3	2.1	-
22	6.7	7.0	81	494	8270	1075	3.4	27.4	75.5	16.4	2.4	5.7
23	7.1	7.0	62	551	8370	948	3.3	25.6	81.8	15.5	2.8	-
24	6.8	7.0	95	530	7367	747	3.4	23.1	79.8	13.5	3.0	3.7
25	6.6	7.0	64	478	5518	614	3.4	18.4	75.0	14.0	3.4	7.6
26	6.5	7.0	62	420	5483	549	3.2	18.4	74.5	12.5	3.0	10.0
27	6.8	7.0	78	446	7884	952	3.3	25.3	78.0	15.7	2.3	4.0
28	6.5	7.0	47	477	5447	563	3.4	18.4	74.1	12.8	3.4	9.8
29	6.5	7.0	51	440	5176	550	3.0	17.6	73.6	13.1	3.3	10.1
30	6.3	7.0	127	512	7409	1053	3.4	27.4	67.7	16.1	2.4	13.8
31	6.4	7.0	98	493	7913	1218	3.2	29.0	68.3	17.6	2.2	12.0
32	6.3	6.9	159	712	7833	1173	3.5	29.5	66.4	16.6	3.1	13.8
33	6.4	7.0	67	591	5688	687	2.8	20.3	70.1	14.2	3.8	12.0
34	6.5	7.0	91	547	6246	699	3.4	21.4	73.0	13.7	3.3	10.0
35	6.5	7.0	60	396	5019	504	3.4	16.8	74.7	12.6	3.1	9.6
36	6.5	7.0	53	473	5006	421	3.3	16.5	75.9	10.7	3.7	9.7
37	6.2	6.9	152	717	5829	592	3.4	21.4	68.1	11.6	4.3	15.9
38	6.3	7.0	60	581	5346	530	3.2	19.0	70.4	11.7	4.0	14.0
39	6.3	7.0	47	470	4482	416	3.0	15.7	71.4	11.1	3.9	13.6
40	6.3	7.0	83	489	5667	563	3.4	19.9	71.2	11.8	3.2	13.7
41	6.5	7.0	91	500	6178	606	3.4	20.7	74.7	12.2	3.1	9.9
42	6.2	7.0	76	660	4910	426	3.0	17.7	69.4	10.1	4.8	15.7

ANALYTICAL SERVICES FOR AGRICULTURE



ANALYTICAL SERVICES FOR AGRICULTURE