

1b/A

# BROOKSIDE LABORATORIES, INC. 84544-2

## SOIL AUDIT AND INVENTORY REPORT

Name G & V Farms City \_\_\_\_\_ State \_\_\_\_\_

Independent Consultant BCS, LLC Date 11/10/2020

Sample Location	F4	F4	F4	F4	F4	
<b>TURNER 84</b>						
Sample Identification	A	B	C	D	E	
Lab Number	0231-1	0232-1	0233-1	0234-1	0235-1	
Total Exchange Capacity (ME/100 g)	17.70	14.11	18.55	14.41	15.94	
pH	Buffer (SMP/Sikora)	6.3	6.8	6.3	6.9	6.5
	H <sub>2</sub> O (1:1)	4.9	5.5	5.2	5.3	5.2
Organic Matter (360°C LOI) %	3.71	3.56	3.75	3.73	3.34	
Estimated Nitrogen Release lb/A	87	86	88	87	83	
<b>SOLUBLE SULFUR* ppm</b>						
• MEHLICH III lb/A P as P <sub>2</sub> O <sub>5</sub>	128	142	92	96	78	
• ppm of P	28	31	20	21	17	
• BRAY II lb/A P as P <sub>2</sub> O <sub>5</sub>	105	174	64	82	50	
• ppm of P	23	38	14	18	11	
• OLSEN lb/A P as P <sub>2</sub> O <sub>5</sub>						
• ppm of P						
<b>CALCIUM* lb/A</b>						
• ppm	3150	4006	3346	4166	3180	
<b>MAGNESIUM* lb/A</b>						
• ppm	390	486	492	754	542	
<b>POTASSIUM* lb/A</b>						
• ppm	292	258	240	248	262	
<b>SODIUM* lb/A</b>						
• ppm	26	30	30	34	32	
<b>BASE SATURATION PERCENT</b>						
Calcium %	44.49	70.98	45.09	72.28	49.87	
Magnesium %	9.18	14.35	11.05	21.80	14.17	
Potassium %	2.12	2.34	1.66	2.21	2.11	
Sodium %	0.32	0.46	0.35	0.51	0.44	
Other Bases %	NA	NA	NA	NA	NA	
Hydrogen %	43.88	11.88	41.87	3.18	33.44	
<b>EXTRACTABLE MINORS</b>						
Boron* (ppm)	0.22	0.33	0.33	0.36	0.34	
Iron* (ppm)	213	205	187	208	173	
Manganese* (ppm)	84	57	68	66	67	
Copper* (ppm)	1.79	2.12	1.80	1.63	1.51	
Zinc* (ppm)	1.06	1.75	0.91	0.94	1.92	
Aluminum* (ppm)	895	720	833	838	862	
Soluble Salts (mmhos/cm)						
Chlorides (ppm)						

\* Mehlich III Extractable

1b/A

# BROOKSIDE LABORATORIES, INC.

84544-2

## SOIL AUDIT AND INVENTORY REPORT

Name G & V Farms City \_\_\_\_\_ State \_\_\_\_\_

Independent Consultant BCS, LLC Date 11/10/2020

Sample Location	F4	F4	F4	F4	F4	
TURNER 84						
Sample Identification	F	G	H	J	K	
Lab Number	0236-1	0237-1	0238-1	0239-1	0240-1	
Total Exchange Capacity (ME/100 g)	16.70	17.16	15.28	14.56	19.15	
pH	Buffer (SMP/Sikora)	6.9	6.8	6.9	6.8	NA
	H <sub>2</sub> O (1:1)	5.4	5.3	5.4	5.5	7.4
Organic Matter (360°C LOI) %	4.10	4.18	3.62	3.60	3.81	
Estimated Nitrogen Release lb/A	91	92	86	86	88	
<b>SOLUBLE SULFUR*</b>						
ppm	8	8	9	8	10	
• MEHLICH III lb/A P as P <sub>2</sub> O <sub>5</sub>	151	105	87	87	724	
• ppm of P	33	23	19	19	158	
• BRAY II lb/A P as P <sub>2</sub> O <sub>5</sub>	169	64	69	64	1081	
• ppm of P	37	14	15	14	236	
• OLSEN lb/A P as P <sub>2</sub> O <sub>5</sub>						
• ppm of P						
<b>CATIONIC CATIONS</b>						
CALCIUM* lb/A	5008	4944	4592	4004	5600	
ppm	2504	2472	2296	2002	2800	
MAGNESIUM* lb/A	770	656	692	586	870	
ppm	385	328	346	293	435	
POTASSIUM* lb/A	348	250	298	286	1152	
ppm	174	125	149	143	576	
SODIUM* lb/A	30	30	36	30	24	
ppm	15	15	18	15	12	
<b>BASE SATURATION PERCENT</b>						
Calcium %	74.97	72.03	75.13	68.75	73.11	
Magnesium %	19.21	15.93	18.87	16.77	18.93	
Potassium %	2.67	1.87	2.50	2.52	7.71	
Sodium %	0.39	0.38	0.51	0.45	0.27	
Other Bases %	NA	NA	NA	NA	NA	
Hydrogen %	2.74	9.77	3.00	11.51	0.00	
<b>EXTRACTABLE MINORS</b>						
Boron* (ppm)	0.52	0.24	0.32	0.34	0.91	
Iron* (ppm)	237	205	199	179	265	
Manganese* (ppm)	41	46	67	64	98	
Copper* (ppm)	2.32	1.81	1.71	1.69	4.00	
Zinc* (ppm)	1.49	2.77	1.18	2.36	19.37	
Aluminum* (ppm)	799	835	927	857	599	
Soluble Salts (mmhos/cm)						
Chlorides (ppm)						

a - alkaline soil

\* Mehlich III Extractable



1b/A

# BROOKSIDE LABORATORIES, INC.

84544-2

## SOIL AUDIT AND INVENTORY REPORT

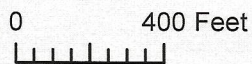
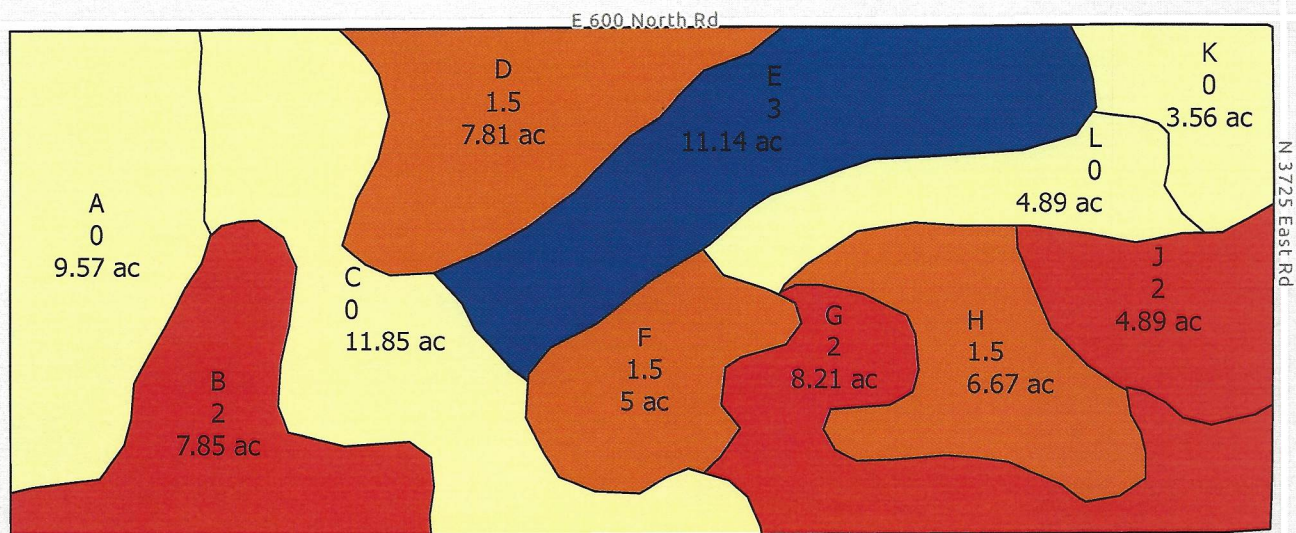
Name G & V Farms City \_\_\_\_\_ State \_\_\_\_\_

Independent Consultant BCS, LLC Date 11/10/2020

Sample Location	TURNER 84	F4			
Sample Identification		L			
Lab Number		0241-1			
Total Exchange Capacity (ME/100 g)		19.62			
pH	Buffer (SMP/Sikora)	7.1			
	H <sub>2</sub> O (1:1)	6.0			
Organic Matter (360°C LOI) %		4.35			
Estimated Nitrogen Release	lb/A	94			
• • • • •	SOLUBLE SULFUR*	ppm	7		
	• MEHLICH III	lb/A P as P <sub>2</sub> O <sub>5</sub>	256		
	•	ppm of P	56		
	• BRAY II	lb/A P as P <sub>2</sub> O <sub>5</sub>	348		
	•	ppm of P	76		
•	• OLSEN	lb/A P as P <sub>2</sub> O <sub>5</sub>			
•		ppm of P			
• • • • •	CALCIUM*	lb/A	6078		
		ppm	3039		
	MAGNESIUM*	lb/A	812		
		ppm	406		
• • • •	POTASSIUM*	lb/A	768		
		ppm	384		
• •	SODIUM*	lb/A	28		
		ppm	14		
<b>BASE SATURATION PERCENT</b>					
	Calcium	%	77.45		
	Magnesium	%	17.24		
	Potassium	%	5.02		
	Sodium	%	0.31		
	Other Bases	%	NA		
	Hydrogen	%	0.00		
<b>EXTRACTABLE MINORS</b>					
	Boron* (ppm)		0.81		
	Iron* (ppm)		254		
	Manganese* (ppm)		60		
	Copper* (ppm)		2.74		
	Zinc* (ppm)		4.60		
	Aluminum* (ppm)		681		
• • • •	Soluble Salts (mmhos/cm)				
	Chlorides (ppm)				

\* Mehlich III Extractable

# Calcium Lime

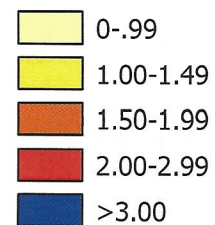


Esri Community Maps Contributors, McGIS-McLean County GIS, Esri, HERE, Garmin, SafeGraph, INCREMENT P, METI/NASA, USGS, EPA, NPS, US Census Bureau, USA

Grower: G & V Farms  
 Farm: G & V Farms  
 Field: F4-Turner 84  
 Year: 2020  
 Total Ca Lime: 104.54 tons  
 Avg Ca Lime: 1.28 tons/acre  
 Acres: 81.44

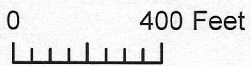
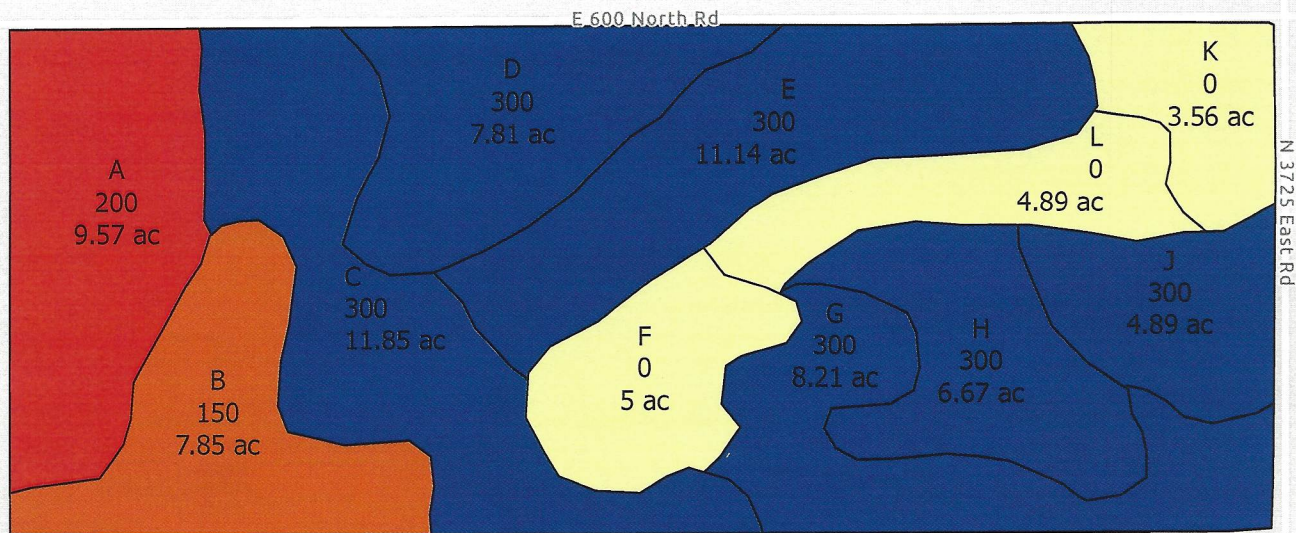


## Ca Lime (tons/acre)





# MAP (11-52-0)

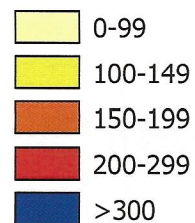


Esri Community Maps Contributors, McGIS-McLean County GIS, Esri, HERE, Garmin, SafeGraph, INCREMENT P, METI/NASA, USGS, EPA, NPS, US Census Bureau, USDA

Grower: G & V Farms  
 Farm: G & V Farms  
 Field: F4-Turner 84  
 Year: 2020  
 Total MAP Blend: 9.13 tons  
 Avg MAP Blend: 224.24 lbs/acre  
 Acres: 81.44

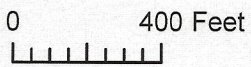
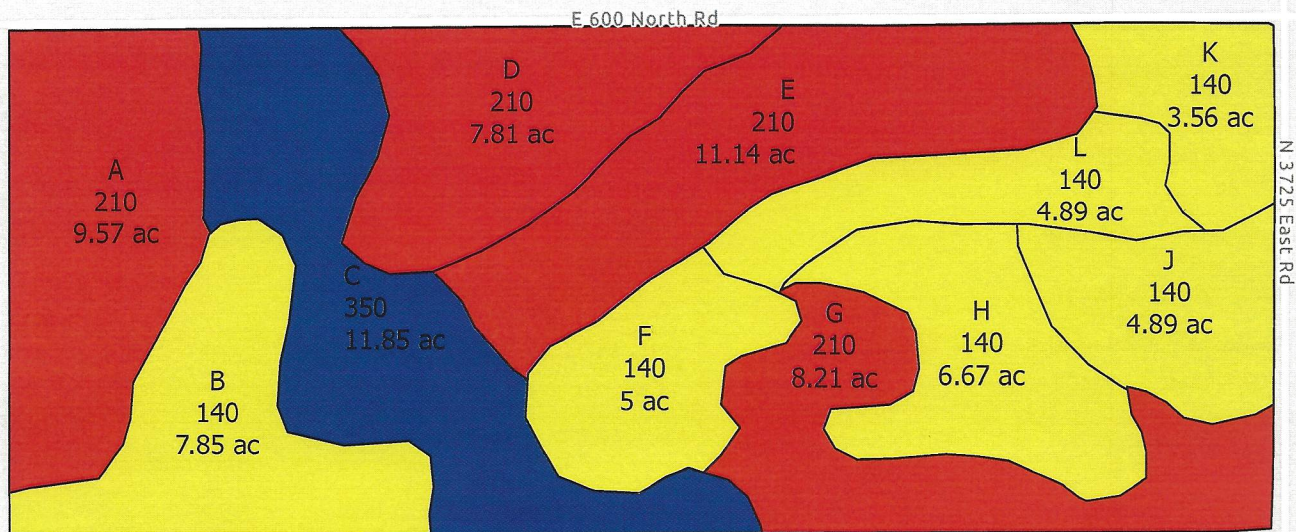


## MAP (lbs/acre)





# Potash (0-0-60), Sulfur (90%), Boron (13%), and ZnSO4 (35%)



Esri Community Maps Contributors, McGIS-McLean County GIS, Esri, HERE, Garmin, SafeGraph, INCREMENT P, METI/NASA, USGS, EPA, NPS, US Census Bureau, USDA

Grower: G & V Farms  
 Farm: G & V Farms  
 Field: F4-Turner 84  
 Year: 2020  
 Total Potash Blend: 8.23 tons  
 Avg Potash Blend: 202.13 lbs/acre  
 Acres: 81.44



## Potash Blend (lbs/acre)

