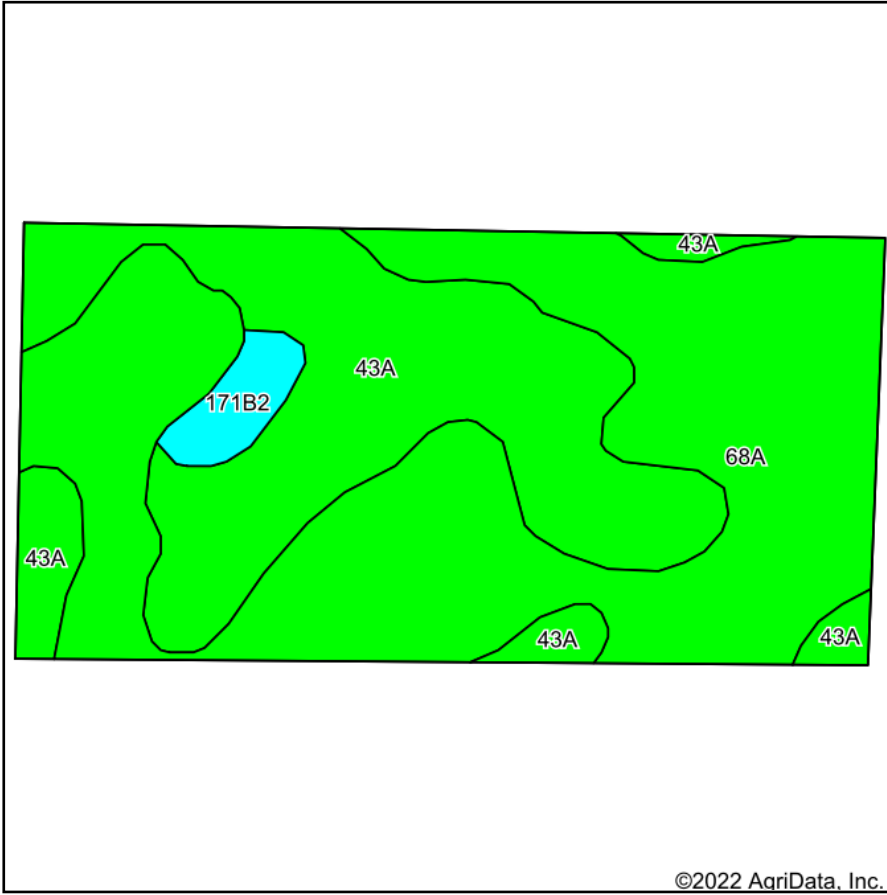
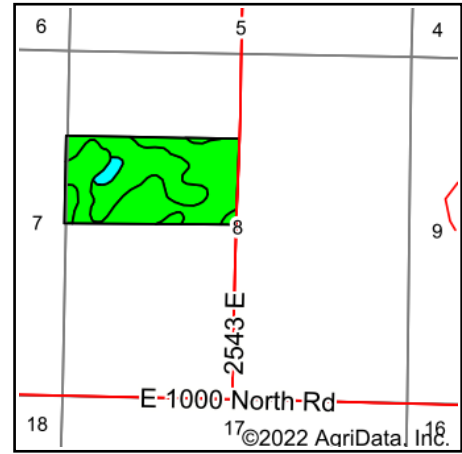


Soils Map



Soils data provided by USDA and NRCS.



State: **Illinois**
 County: **De Witt**
 Location: **8-20N-5E**
 Township: **Santa Anna**
 Acres: **79.95**
 Date: **8/17/2022**

Maps Provided By:

 CUSTOMIZED ONLINE MAPPING
 © AgriData, Inc. 2021 www.AgriDataInc.com



Area Symbol: IL039, Soil Area Version: 13

Code	Soil Description	Acres	Percent of field	Il. State Productivity Index Legend	Corn Bu/A	Soybeans Bu/A	Crop productivity index for optimum management
68A	Sable silty clay loam, 0 to 2 percent slopes	46.66	58.4%		192	63	143
43A	Ipava silt loam, 0 to 2 percent slopes	31.05	38.8%		191	62	142
**171B2	Catlin silt loam, 2 to 5 percent slopes, eroded	2.24	2.8%		**178	**56	**131
Weighted Average					191.2	62.4	142.3

Table: Optimum Crop Productivity Ratings for Illinois Soil by K.R. Olson and J.M. Lang, Office of Research, ACES, University of Illinois at Champaign-Urbana. Version: 1/2/2012 Amended Table S2 B811

Crop yields and productivity indices for optimum management (B811) are maintained at the following NRES web site: <http://soilproductivity.nres.illinois.edu/>

** Indexes adjusted for slope and erosion according to Bulletin 811 Table S3

Soils data provided by USDA and NRCS. Soils data provided by University of Illinois at Champaign-Urbana.