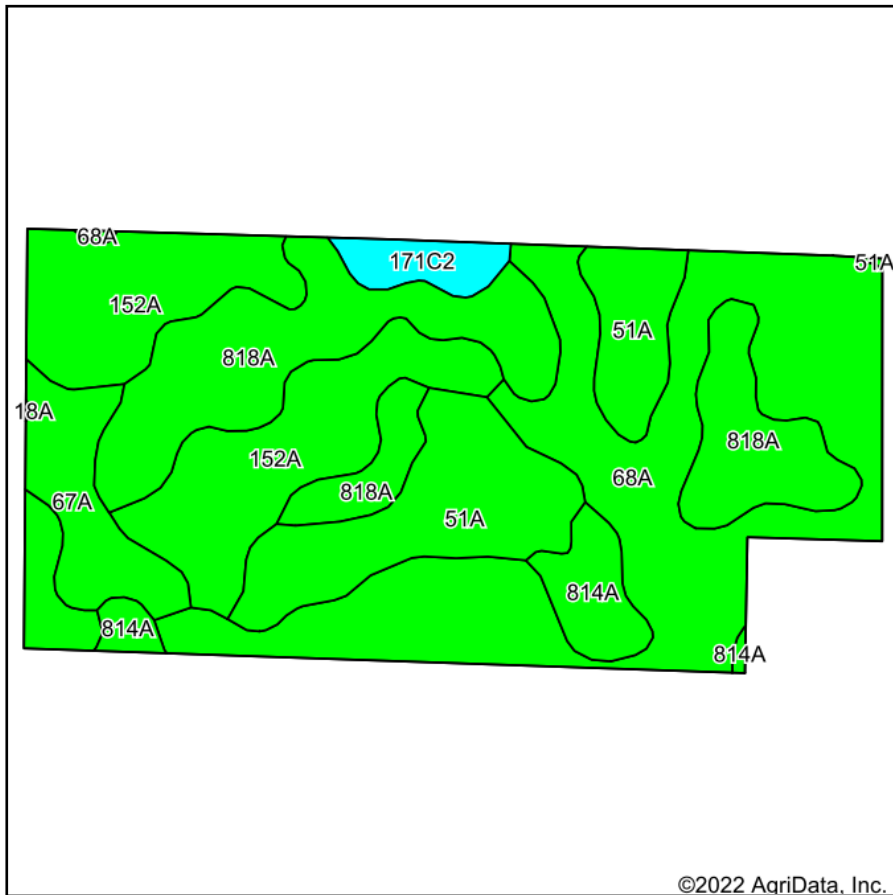
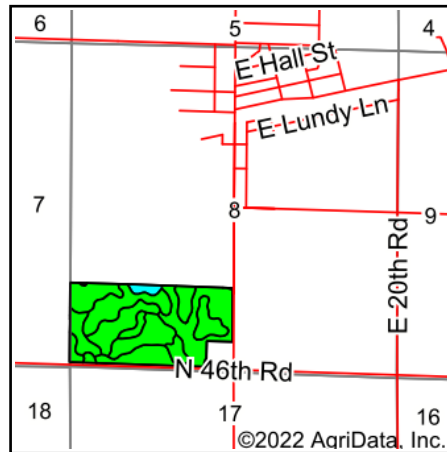


Soils Map



Soils data provided by USDA and NRCS.



State: **Illinois**
 County: **LaSalle**
 Location: **8-36N-4E**
 Township: **Adams**
 Acres: **75.01**
 Date: **5/18/2022**



Area Symbol: IL099, Soil Area Version: 17

| Code | Soil Description | Acres | Percent of field | Il. State Productivity Index Legend | Corn Bu/A | Soybeans Bu/A | Crop productivity index for optimum management |
|-------------------------|--|-------|------------------|-------------------------------------|--------------|---------------|--|
| 68A | Sable silty clay loam, 0 to 2 percent slopes | 23.25 | 31.0% | | 192 | 63 | 143 |
| 152A | Drummer silty clay loam, 0 to 2 percent slopes | 16.00 | 21.3% | | 195 | 63 | 144 |
| 818A | Flanagan-Catlin silt loams, 0 to 3 percent slopes | 16.00 | 21.3% | | 191 | 61 | 142 |
| 51A | Muscatune silt loam, 0 to 2 percent slopes | 10.82 | 14.4% | | 200 | 64 | 147 |
| 67A | Harpster silty clay loam, 0 to 2 percent slopes | 4.23 | 5.6% | | 182 | 57 | 133 |
| 814A | Muscatune-Buckhart silt loams, 0 to 3 percent slopes | 3.03 | 4.0% | | 193 | 62 | 145 |
| **171C2 | Catlin silt loam, 5 to 10 percent slopes, eroded | 1.68 | 2.2% | | **174 | **55 | **128 |
| Weighted Average | | | | | 192.7 | 62.2 | 142.8 |

Table: Optimum Crop Productivity Ratings for Illinois Soil by K.R. Olson and J.M. Lang, Office of Research, ACES, University of Illinois at Champaign-Urbana. Version: 1/2/2012 Amended Table S2 B811

Crop yields and productivity indices for optimum management (B811) are maintained at the following NRES web site: <http://soilproductivity.nres.illinois.edu/>

** Indexes adjusted for slope and erosion according to Bulletin 811 Table S3

Soils data provided by USDA and NRCS. Soils data provided by University of Illinois at Champaign-Urbana.