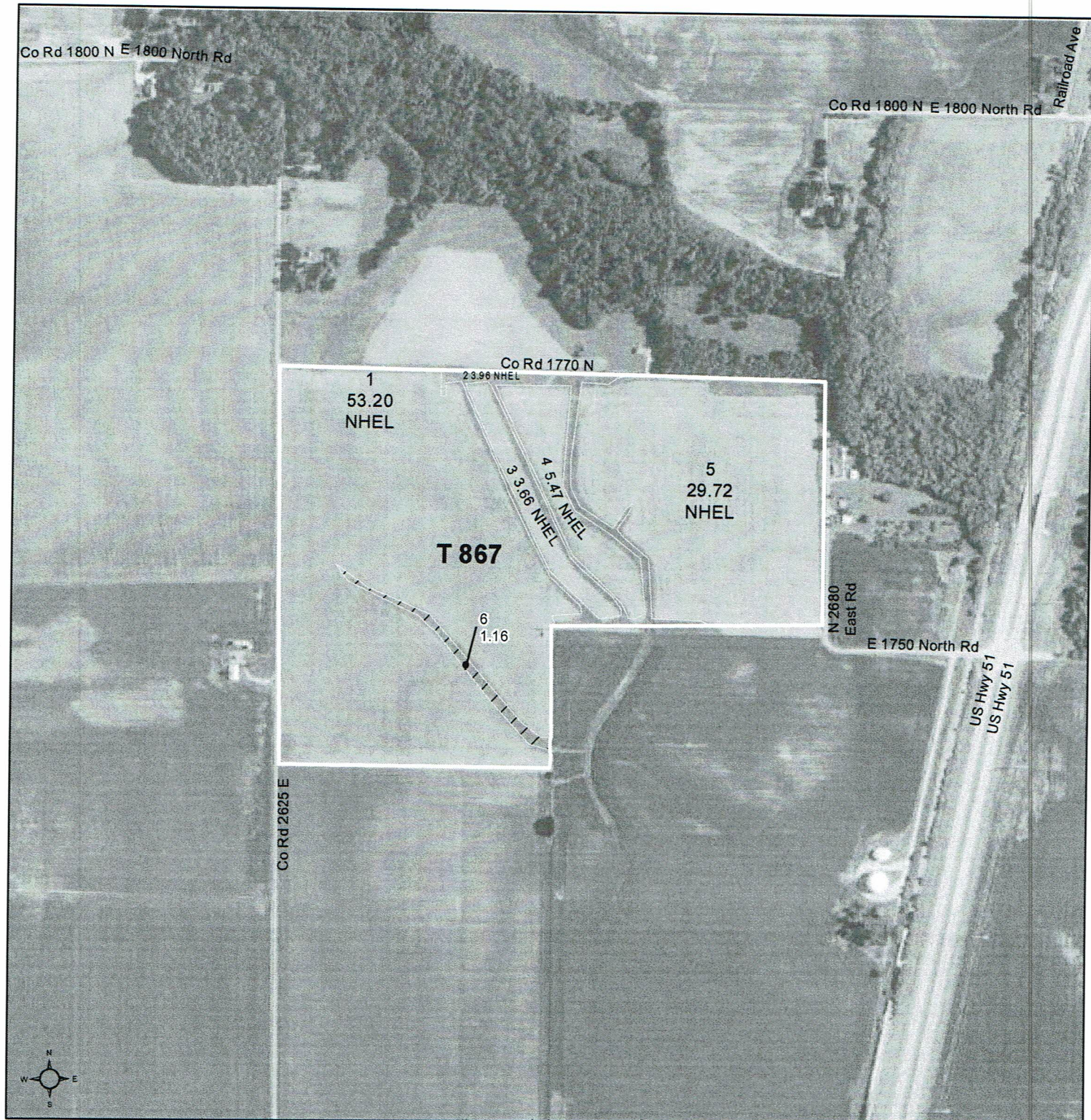




United States
Department of
Agriculture

Christian County, Illinois



Common Land Unit

- Non-Cropland
- Cropland

Wetland Determination

- Restricted Use
- Limited
- Exempt from Conservation Compliance Provisions

Tract Boundary

0 285 570 1,140
Feet
NAIP Imagery 2017

2018 Program Year

Map Created February 02, 2018

Farm 6363
Tract 867

Tract Cropland Total: 96.01 acres

IL021_T867

United States Department of Agriculture (USDA) Farm Service Agency (FSA) maps are for FSA Program administration only. This map does not represent a legal survey or reflect actual ownership; rather it depicts the information provided directly from the producer and/or National Agricultural Imagery Program (NAIP) imagery. The producer accepts the data 'as is' and assumes all risks associated with its use. USDA-FSA assumes no responsibility for actual or consequential damage incurred as a result of any user's reliance on this data outside FSA Programs. Wetland identifiers do not represent the size, shape, or specific determination of the area. Refer to your original determination (CPA-026 and attached maps) for exact boundaries and determinations or contact USDA Natural Resources Conservation Service (NRCS).