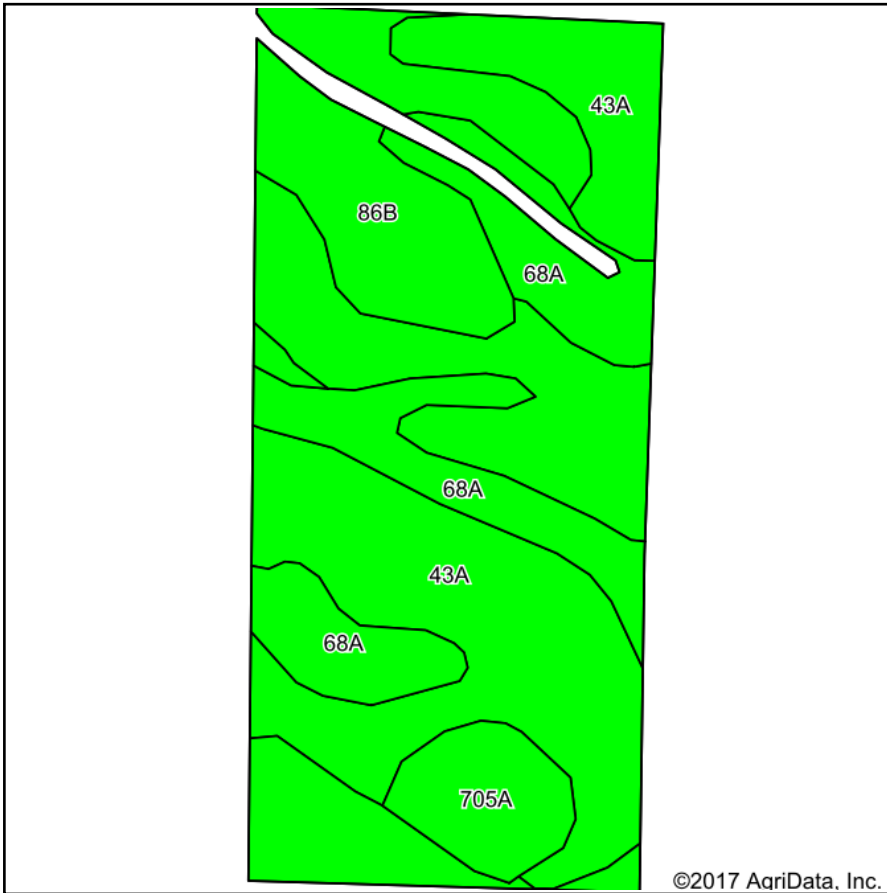
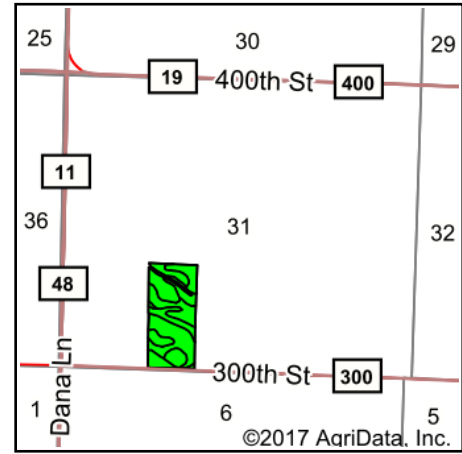


Soils Map



Soils data provided by USDA and NRCS.



State: **Illinois**
 County: **Logan**
 Location: **31-18N-3W**
 Township: **Elkhart**
 Acres: **35.99**
 Date: **1/10/2018**

Maps Provided By:

 CUSTOMIZED ONLINE MAPPING
 © AgriData, Inc. 2017 www.AgriDataInc.com



Area Symbol: IL107, Soil Area Version: 13

Code	Soil Description	Acres	Percent of field	Il. State Productivity Index Legend	Corn Bu/A	Soybeans Bu/A	Crop productivity index for optimum management
43A	Ipava silt loam, 0 to 2 percent slopes	17.86	49.6%		191	62	142
68A	Sable silty clay loam, 0 to 2 percent slopes	9.59	26.6%		192	63	143
**86B	Osco silt loam, 2 to 5 percent slopes	6.34	17.6%		**189	**59	**140
705A	Buckhart silt loam, 0 to 2 percent slopes	2.20	6.1%		190	61	142
Weighted Average					190.9	61.7	141.9

Table: Optimum Crop Productivity Ratings for Illinois Soil by K.R. Olson and J.M. Lang, Office of Research, ACES, University of Illinois at Champaign-Urbana. Version: 1/2/2012 Amended Table S2 B811

Crop yields and productivity indices for optimum management (B811) are maintained at the following NRES web site:

<https://www.ideals.illinois.edu/handle/2142/1027/>

** Indexes adjusted for slope and erosion according to Bulletin 811 Table S3

Soils data provided by USDA and NRCS. Soils data provided by University of Illinois at Champaign-Urbana.