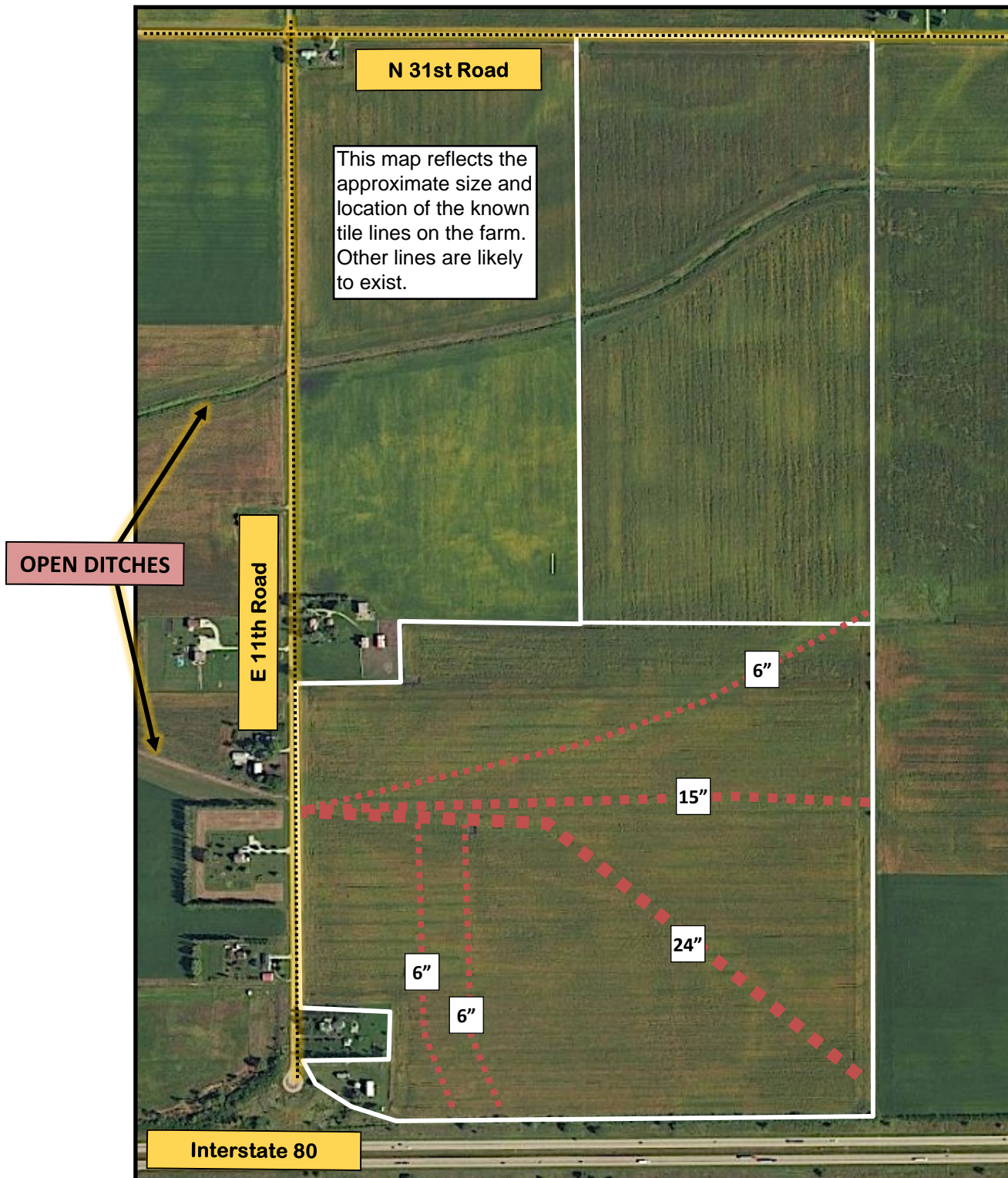


DRAINAGE INFORMATION
The Kuhn Estate 209.4 Acre Land Auction
The Loranda Group & Land Pro LLC



1. Location and size of tile lines provided by Tenant.
2. 2,350 feet of 6" plastic was installed in early 2016.
3. The Drainage Commissioner for the area indicated that the underground tile is privately owned, however, the district is active in making sure the open ditches remain clean. The commissioner also commented that the Kuhn Farm does not often have standing water, unless it's during periods of excessive rainfall.
4. Aerial footage of the farm taken in the summer of 2016 by a drone can be found on the Loranda YouTube channel - www.youtube.com/user/LorandaGroup#p/

AREA DRAINAGE OVERVIEW

The Kuhn Estate 209.4 Acre Land Auction
The Loranda Group & Land Pro LLC

